

TYPICAL EIFS CONFIGURATION

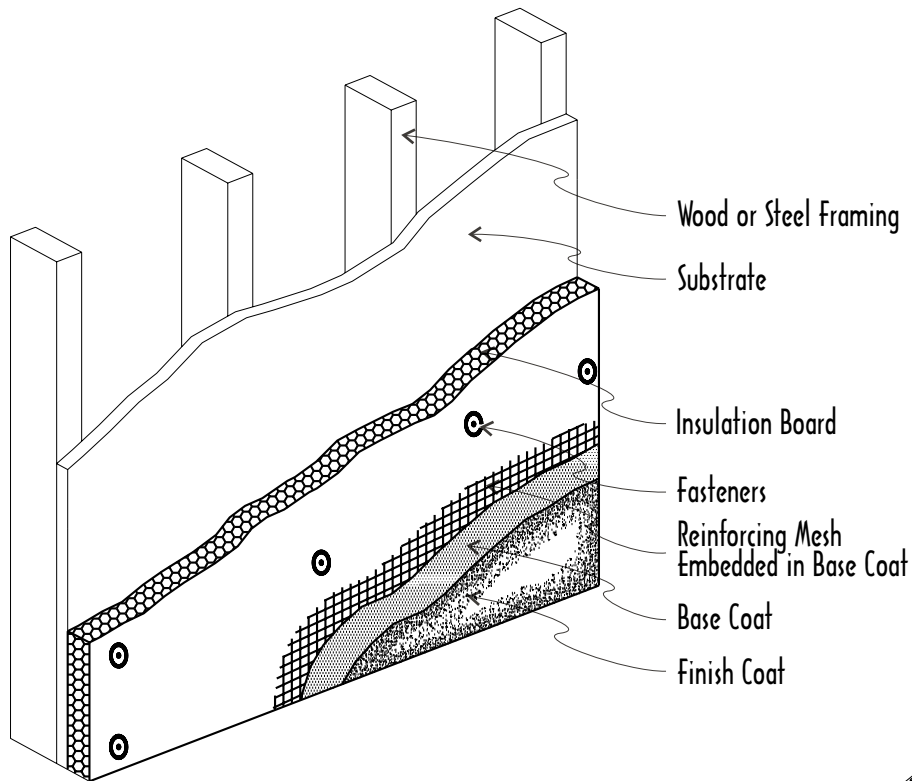
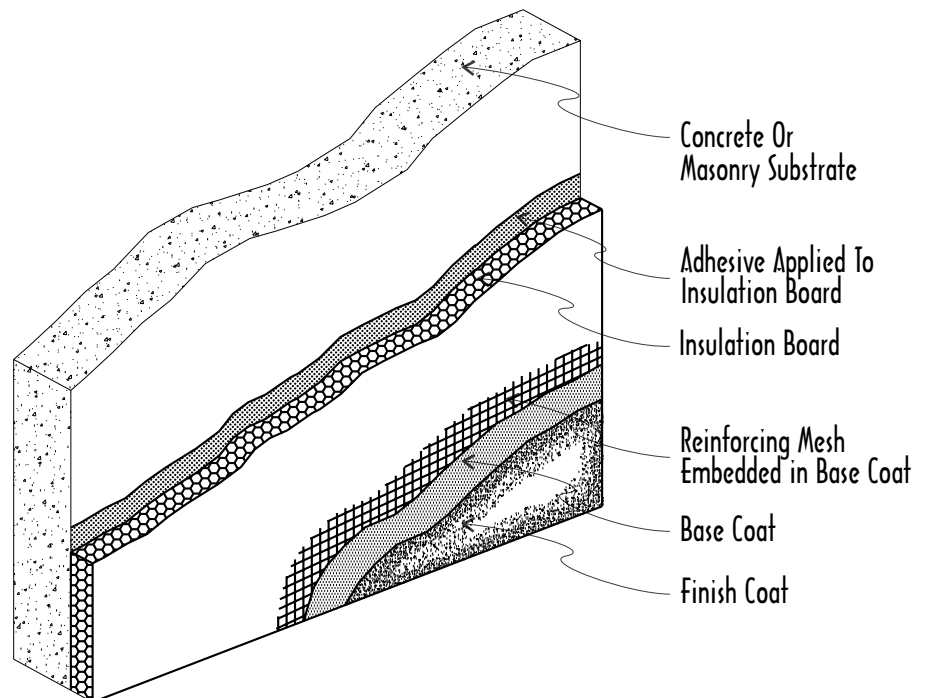


Fig. 1 STEEL OR WOOD FRAMING
EIFS may be attached by mechanical fasteners (as shown) or by adhesive (as shown below).

Fig. 2 CONCRETE AND MASONRY
EIFS attached to concrete or masonry using adhesive. Mechanical fasteners may also be used.



EIFS Industry Members Association
3000 Corporate Center Drive
Morrow, GA 30260
(800) 294-3462

These drawings and comments are for general information only, and EIMA specifically disclaims any design or construction intent or responsibility. THERE ARE NO WARRANTIES, EXPRESS OR IMPLIED, ISSUED OR MADE BY EIMA IN CONNECTION WITH THESE DRAWINGS AND COMMENTS OR REGARDING THE USE OF EIFS. These drawings are not intended and should not be used as a substitute for the EIFS system manufacturer's specifications and recommended construction practices and/or for professional building design services.

The specification, design and construction of all EIFS must comply with local building codes and standards, applicable compliance reports and the individual manufacturer's system requirements. These requirements differ materially. Only the EIFS manufacturer or design professional can furnish specifications, details, drawings, and construction practices to be followed for actual construction and use of an EIFS product and for compliance with applicable local building codes and construction practices. The successful installation and performance of EIFS cladding is dependent upon the proper design and construction of the adjacent materials and systems of the structure. For these reasons, only a licensed and qualified design professional can create and issue specifications, drawings and details for actual or prospective construction or renovation using EIFS. These drawings and comments apply only to new construction beginning in 2000, and are not intended for inspections, retrofit or repair. These drawings are not intended as an exclusive method for achieving desired performance. Alternative configurations may achieve equal or better performance.

These drawings and comments apply only to complete EIFS products as specifically defined in the current edition of EIMA Classification Paper.

EPS BOARD LAYOUT

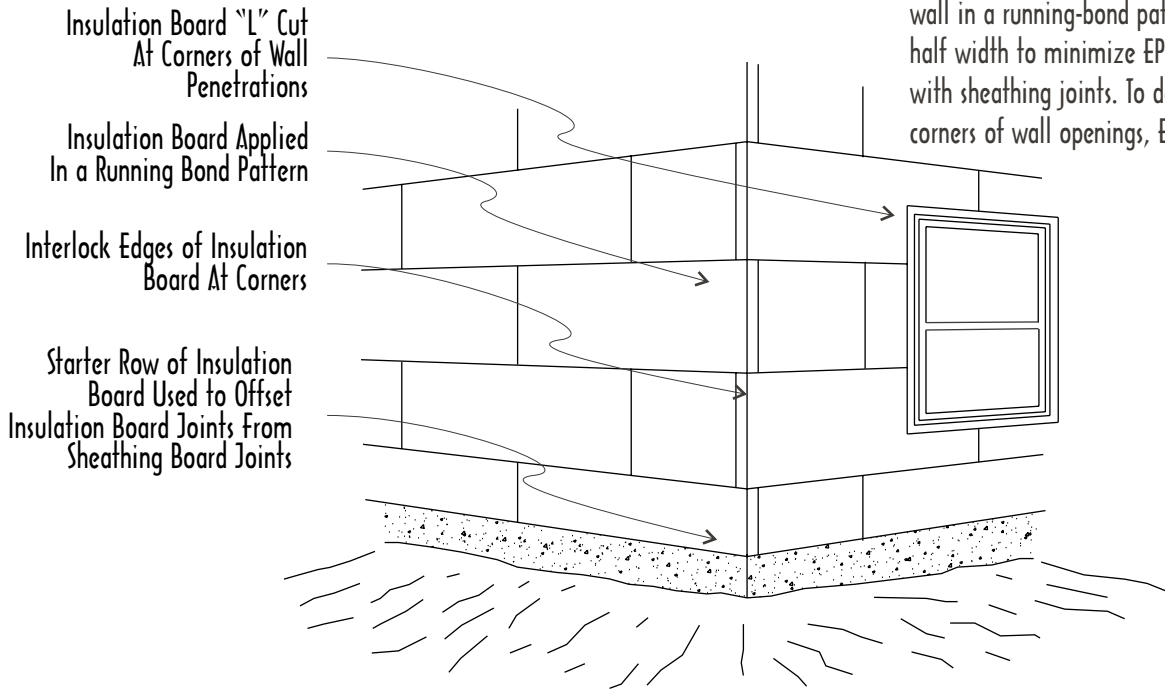


Fig. 1 EPS BOARD LAYOUT

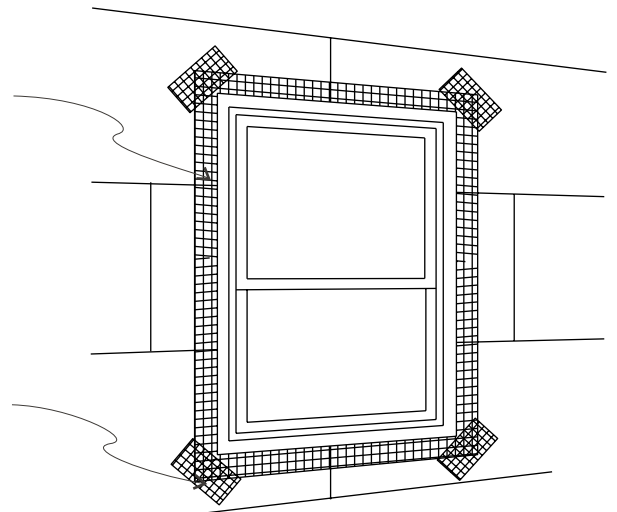
The Expanded Polystyrene Board (EPS) is placed on the wall in a running-bond pattern. The first row is generally half width to minimize EPS board joints from lining up with sheathing joints. To decrease base coat stress at corners of wall openings, EPS boards are "L" cut.

Encapsulate Insulation Board Edge With Reinforcing Mesh And Base Coat.

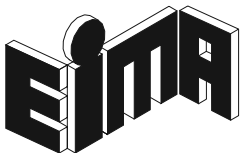
Fig. 2 MESH TREATMENT AT FENESTRATION

To further guard against cracking, diagonal pieces of mesh called butterflies are placed over the wrapped mesh at corners of the opening.

Strips of Reinforcing Mesh Placed Diagonally At Opening Corners



NOTE: Window flashings, not shown, are placed at the head and sill.



EIFS Industry Members Association
3000 Corporate Center Drive
Morrow, GA 30260
(800) 294-3462

These drawings and comments are for general information only, and EIMA specifically disclaims any design or construction intent or responsibility. THERE ARE NO WARRANTIES, EXPRESS OR IMPLIED, ISSUED OR MADE BY EIMA IN CONNECTION WITH THESE DRAWINGS AND COMMENTS OR REGARDING THE USE OF EIFS. These drawings are not intended and should not be used as a substitute for the EIFS system manufacturer's specifications and recommended construction practices and/or for professional building design services.

The specification, design and construction of all EIFS must comply with local building codes and standards, applicable compliance reports and the individual manufacturer's system requirements. These requirements differ materially. Only the EIFS manufacturer or design professional can furnish specifications, details, drawings, and construction practices to be followed for actual construction and use of an EIFS product and for compliance with applicable local building codes and construction practices. The successful installation and performance of EIFS cladding is dependent upon the proper design and construction of the adjacent materials and systems of the structure. For these reasons, only a licensed and qualified design professional can create and issue specifications, drawings and details for actual or prospective construction or renovation using EIFS. These drawings and comments apply only to new construction beginning in 2000, and are not intended for inspections, retrofit or repair. These drawings are not intended as an exclusive method for achieving desired performance. Alternative configurations may achieve equal or better performance.

These drawings and comments apply only to complete EIFS products as specifically defined in the current edition of EIMA Classification Paper.

OPTIONS FOR TERMINATING AT FOUNDATION

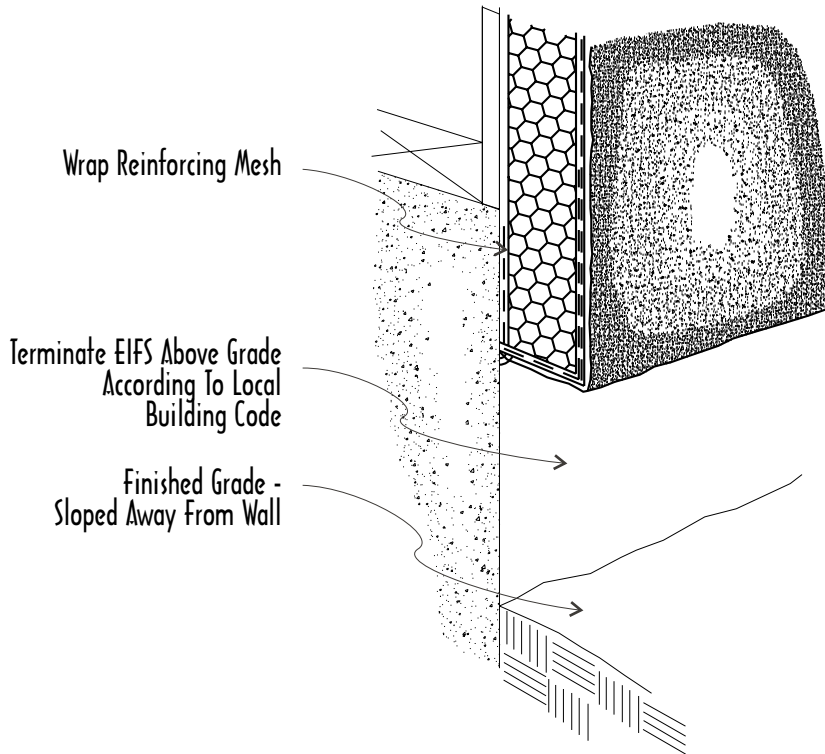
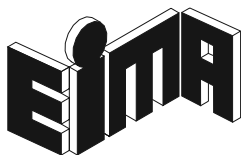
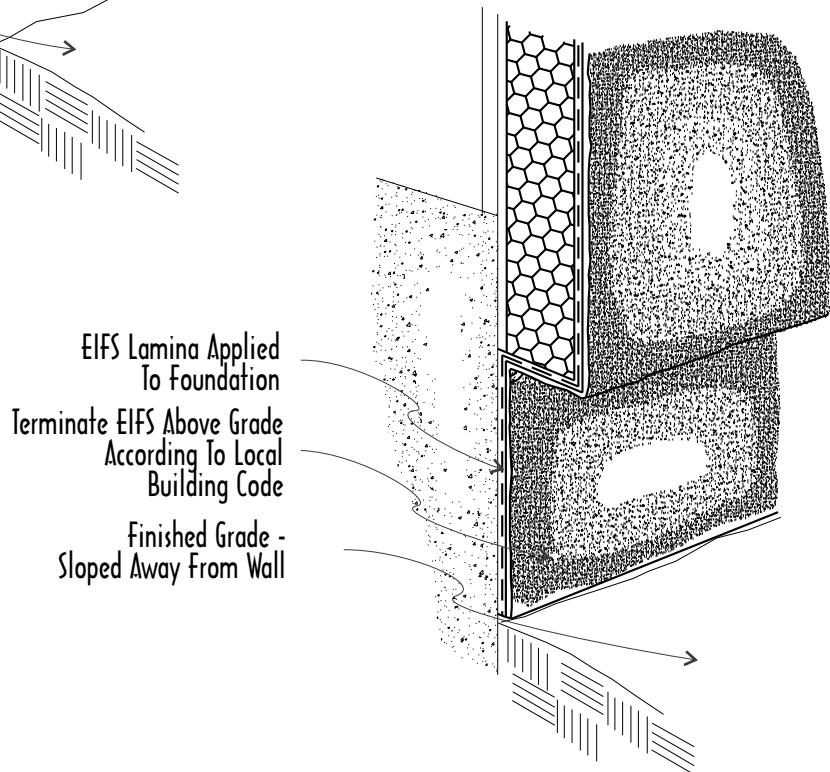


Fig. 1 WRAPPING - Alternate 1
Fiber mesh located between substrate and insulation is attached either by base coat, adhesive, or mechanical anchorage.

Fig. 2 WRAPPING - Alternate 2
To give the foundation the appearance of EIFS, the reinforced base coat and finish may be lapped onto the foundation.



EIFS Industry Members Association
3000 Corporate Center Drive
Morrow, GA 30260
(800) 294-3462

These drawings and comments are for general information only, and EIMA specifically disclaims any design or construction intent or responsibility. THERE ARE NO WARRANTIES, EXPRESS OR IMPLIED, ISSUED OR MADE BY EIMA IN CONNECTION WITH THESE DRAWINGS AND COMMENTS OR REGARDING THE USE OF EIFS. These drawings are not intended and should not be used as a substitute for the EIFS system manufacturer's specifications and recommended construction practices and/or for professional building design services.

The specification, design and construction of all EIFS must comply with local building codes and standards, applicable compliance reports and the individual manufacturer's system requirements. These requirements differ materially. Only the EIFS manufacturer or design professional can furnish specifications, details, drawings, and construction practices to be followed for actual construction and use of an EIFS product and for compliance with applicable local building codes and construction practices. The successful installation and performance of EIFS cladding is dependent upon the proper design and construction of the adjacent materials and systems of the structure. For these reasons, only a licensed and qualified design professional can create and issue specifications, drawings and details for actual or prospective construction or renovation using EIFS. These drawings and comments apply only to new construction beginning in 2000, and are not intended for inspections, retrofit or repair. These drawings are not intended as an exclusive method for achieving desired performance. Alternative configurations may achieve equal or better performance.

These drawings and comments apply only to complete EIFS products as specifically defined in the current edition of EIMA Classification Paper.

SEALANT CONFIGURATION OPTIONS

Refer to the sealant manufacturer's guidelines for specific installation requirements.

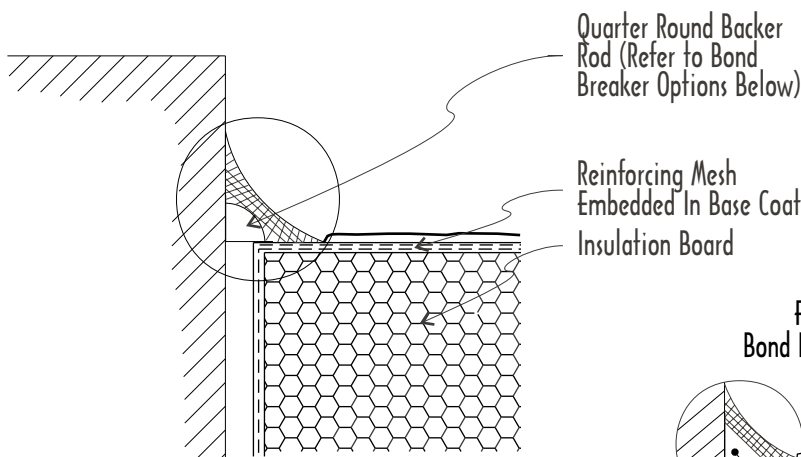


Fig. 1 FILLET JOINT

Fillet beads may be used for weather seal joints, such as at window and door perimeter. Note that sealant is applied to the reinforced base coat and not to the finish coat.

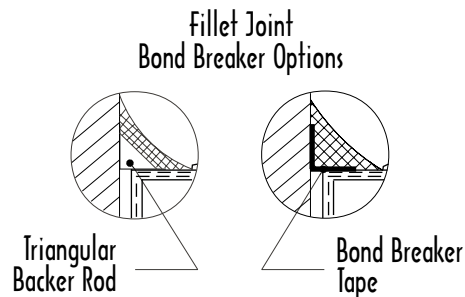
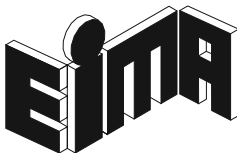
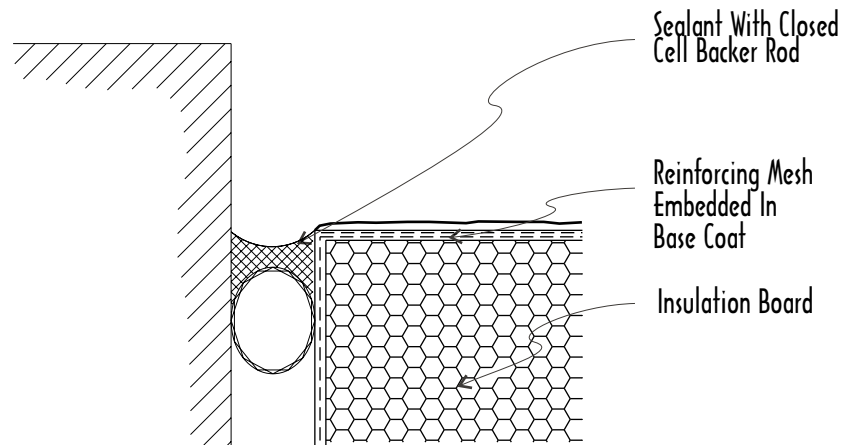


Fig. 2 BUTT JOINT

Expansion joints should be designed for a minimum of four times the anticipated movement, but not less than 3/4" (19 mm). For joints where movement has been determined to be negligible, the minimum butt joint size is 1/2" (13 mm). Note that sealant is applied to the reinforced base coat and not to the finish coat.



EIFS Industry Members Association
3000 Corporate Center Drive
Morrow, GA 30260
(800) 294-3462

These drawings and comments are for general information only, and EIMA specifically disclaims any design or construction intent or responsibility. THERE ARE NO WARRANTIES, EXPRESS OR IMPLIED, ISSUED OR MADE BY EIMA IN CONNECTION WITH THESE DRAWINGS AND COMMENTS OR REGARDING THE USE OF EIFS. These drawings are not intended and should not be used as a substitute for the EIFS system manufacturer's specifications and recommended construction practices and/or for professional building design services.

The specification, design and construction of all EIFS must comply with local building codes and standards, applicable compliance reports and the individual manufacturer's system requirements. These requirements differ materially. Only the EIFS manufacturer or design professional can furnish specifications, details, drawings, and construction practices to be followed for actual construction and use of an EIFS product and for compliance with applicable local building codes and construction practices. The successful installation and performance of EIFS cladding is dependent upon the proper design and construction of the adjacent materials and systems of the structure. For these reasons, only a licensed and qualified design professional can create and issue specifications, drawings and details for actual or prospective construction or renovation using EIFS. These drawings and comments apply only to new construction beginning in 2000, and are not intended for inspections, retrofit or repair. These drawings are not intended as an exclusive method for achieving desired performance. Alternative configurations may achieve equal or better performance.

These drawings and comments apply only to complete EIFS products as specifically defined in the current edition of EIMA Classification Paper.

WINDOW - METAL FRAMED, EXPOSED SILL PAN

Refer to the window manufacturer's guidelines for specific installation requirements.

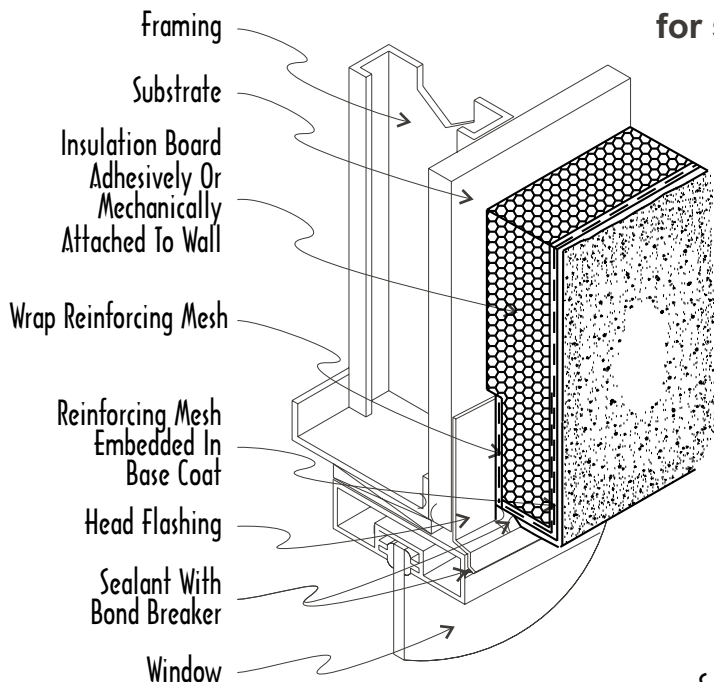
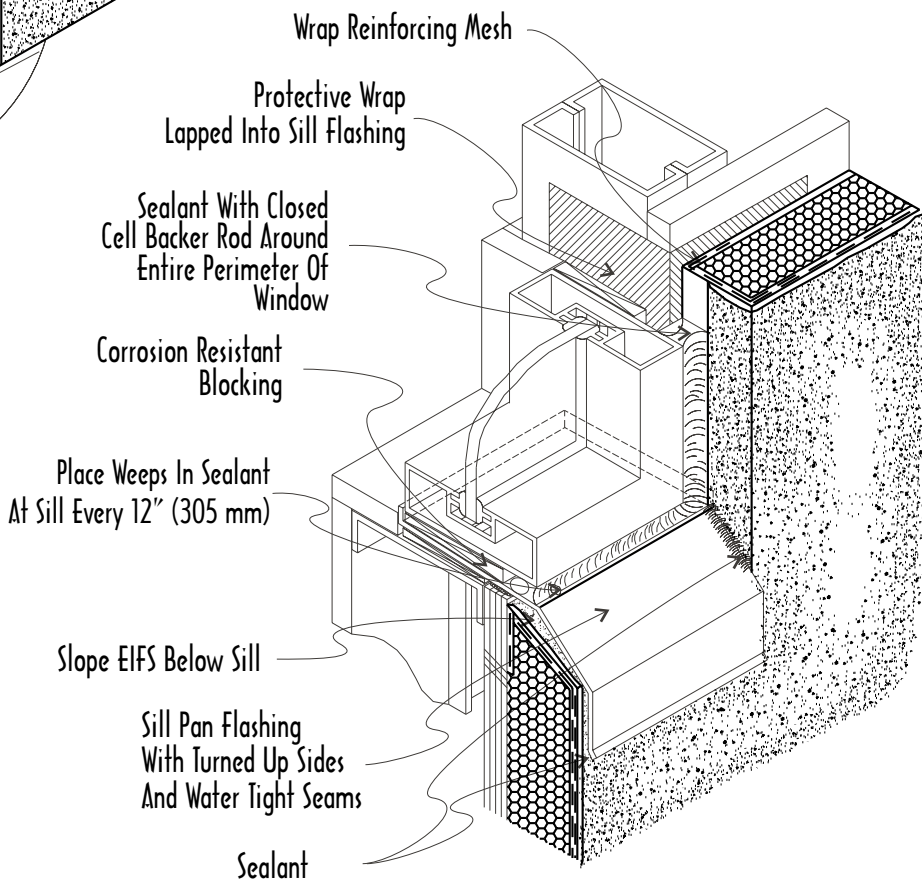


Fig. 1 WINDOW HEAD

Even with the use of head flashing, sealant is still required, as indicated, and serves to complement the flashing in establishing a water tight, continuous weather seal between the EIFS and the window frame.

Fig. 2 WINDOW SILL AND JAMB

The purpose of a sill pan flashing is to catch water that may breach the window's barrier or pass beyond the sealant. The flashing should extend between the framing members of the rough opening and be sloped to allow water to drain to the outside of the EIFS. Also, sill pan flashing end dams should extend 1/8" to 3/16" beyond outer plane of window frame. Exposed end dam edge may be covered with sealant if desired for improved appearance. To properly fabricate this detail, the EIFS should be installed before the pan flashing is set in place. This detail reflects an exposed sill pan. However, this type of window may also be installed with a concealed sill pan as depicted in figure 2 of drawings 6 and 7.



EIFS Industry Members Association
3000 Corporate Center Drive
Morrow, GA 30260
(800) 294-3462

These drawings and comments are for general information only, and EIMA specifically disclaims any design or construction intent or responsibility. THERE ARE NO WARRANTIES, EXPRESS OR IMPLIED, ISSUED OR MADE BY EIMA IN CONNECTION WITH THESE DRAWINGS AND COMMENTS OR REGARDING THE USE OF EIFS. These drawings are not intended and should not be used as a substitute for the EIFS system manufacturer's specifications and recommended construction practices and/or for professional building design services.

The specification, design and construction of all EIFS must comply with local building codes and standards, applicable compliance reports and the individual manufacturer's system requirements. These requirements differ materially. Only the EIFS manufacturer or design professional can furnish specifications, details, drawings, and construction practices to be followed for actual construction and use of an EIFS product and for compliance with applicable local building codes and construction practices. The successful installation and performance of EIFS cladding is dependent upon the proper design and construction of the adjacent materials and systems of the structure. For these reasons, only a licensed and qualified design professional can create and issue specifications, drawings and details for actual or prospective construction or renovation using EIFS. These drawings and comments apply only to new construction beginning in 2000, and are not intended for inspections, retrofit or repair. These drawings are not intended as an exclusive method for achieving desired performance. Alternative configurations may achieve equal or better performance.

These drawings and comments apply only to complete EIFS products as specifically defined in the current edition of EIMA Classification Paper.

WINDOW - NAILING FIN, CONCEALED SILL PAN

Refer to the window manufacturer's guidelines for specific installation requirements.

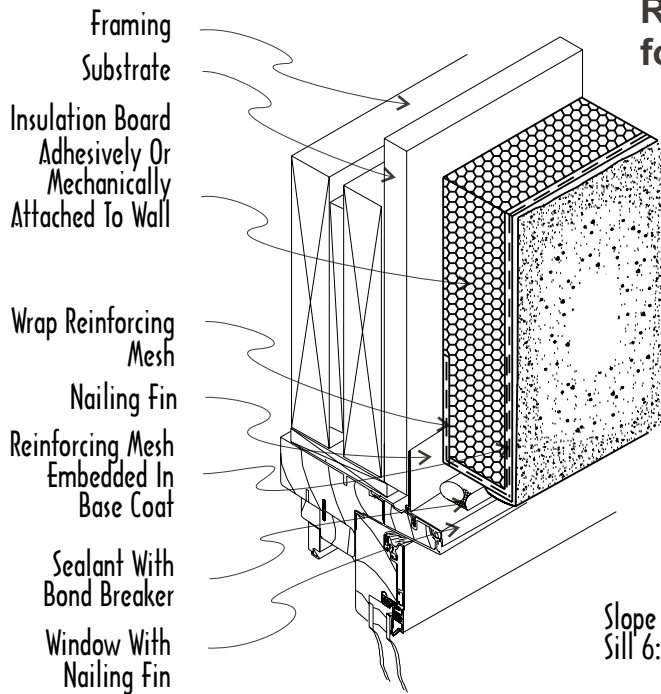
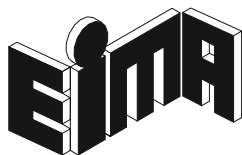
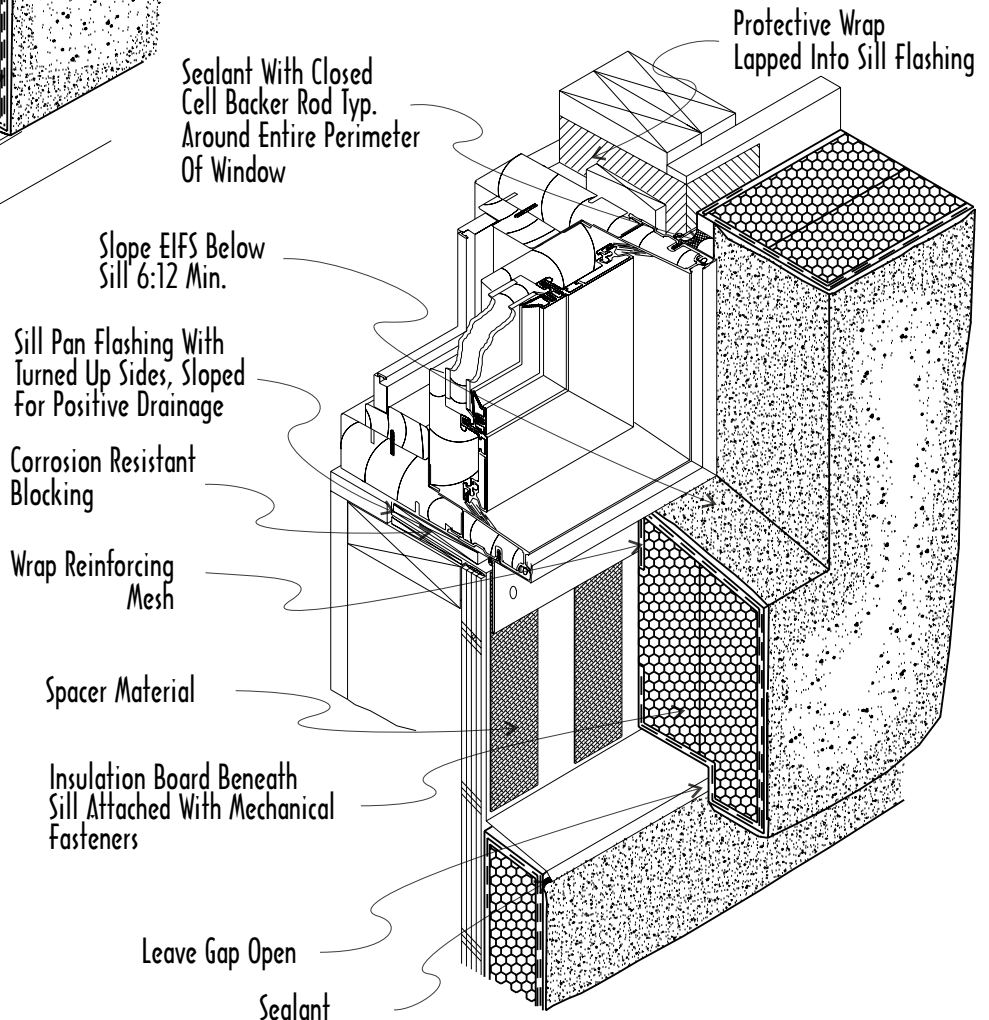


Fig. 1 WINDOW HEAD

Some finned windows are considered "self-flashed". However, a careful examination should be made of the joinery between the head, jamb and sill fins to ensure continuous protection against air and water passage. Any breach in the window's outer cladding should be resolved with additional flashing and/or sealant. Consult the window manufacturer for installation recommendations.

Fig. 2 WINDOW SILL AND JAMB

The purpose of a sill pan flashing is to catch water that may breach the window's barrier or pass beyond the sealant. The flashing should extend between the framing members of the rough opening and be sloped to allow water to drain to the outside of the EIFS. The spacer material should hold the nailing fin off of the sill pan extension by at least 1/8" (3 mm) to form drainage channels.



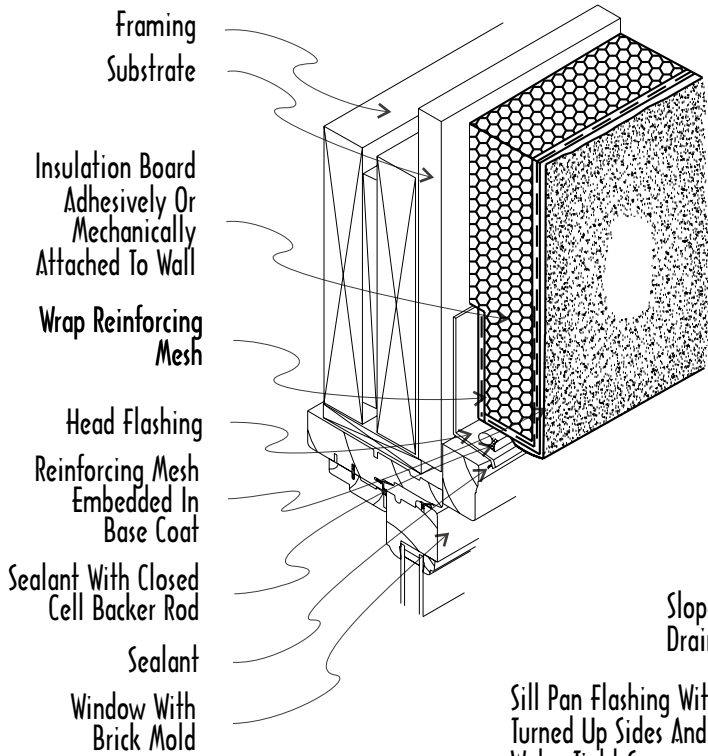
EIFS Industry Members Association
3000 Corporate Center Drive
Morrow, GA 30260
(800) 294-3462

These drawings and comments are for general information only, and EIMA specifically disclaims any design or construction intent or responsibility. THERE ARE NO WARRANTIES, EXPRESS OR IMPLIED, ISSUED OR MADE BY EIMA IN CONNECTION WITH THESE DRAWINGS AND COMMENTS OR REGARDING THE USE OF EIFS. These drawings are not intended and should not be used as a substitute for the EIFS system manufacturer's specifications and recommended construction practices and/or for professional building design services.

The specification, design and construction of all EIFS must comply with local building codes and standards, applicable compliance reports and the individual manufacturer's system requirements. These requirements differ materially. Only the EIFS manufacturer or design professional can furnish specifications, details, drawings, and construction practices to be followed for actual construction and use of an EIFS product and for compliance with applicable local building codes and construction practices. The successful installation and performance of EIFS cladding is dependent upon the proper design and construction of the adjacent materials and systems of the structure. For these reasons, only a licensed and qualified design professional can create and issue specifications, drawings and details for actual or prospective construction or renovation using EIFS. These drawings and comments apply only to new construction beginning in 2000, and are not intended for inspections, retrofit or repair. These drawings are not intended as an exclusive method for achieving desired performance. Alternative configurations may achieve equal or better performance.

These drawings and comments apply only to complete EIFS products as specifically defined in the current edition of EIMA Classification Paper.

WINDOW - BRICK MOLD, CONCEALED SILL PAN



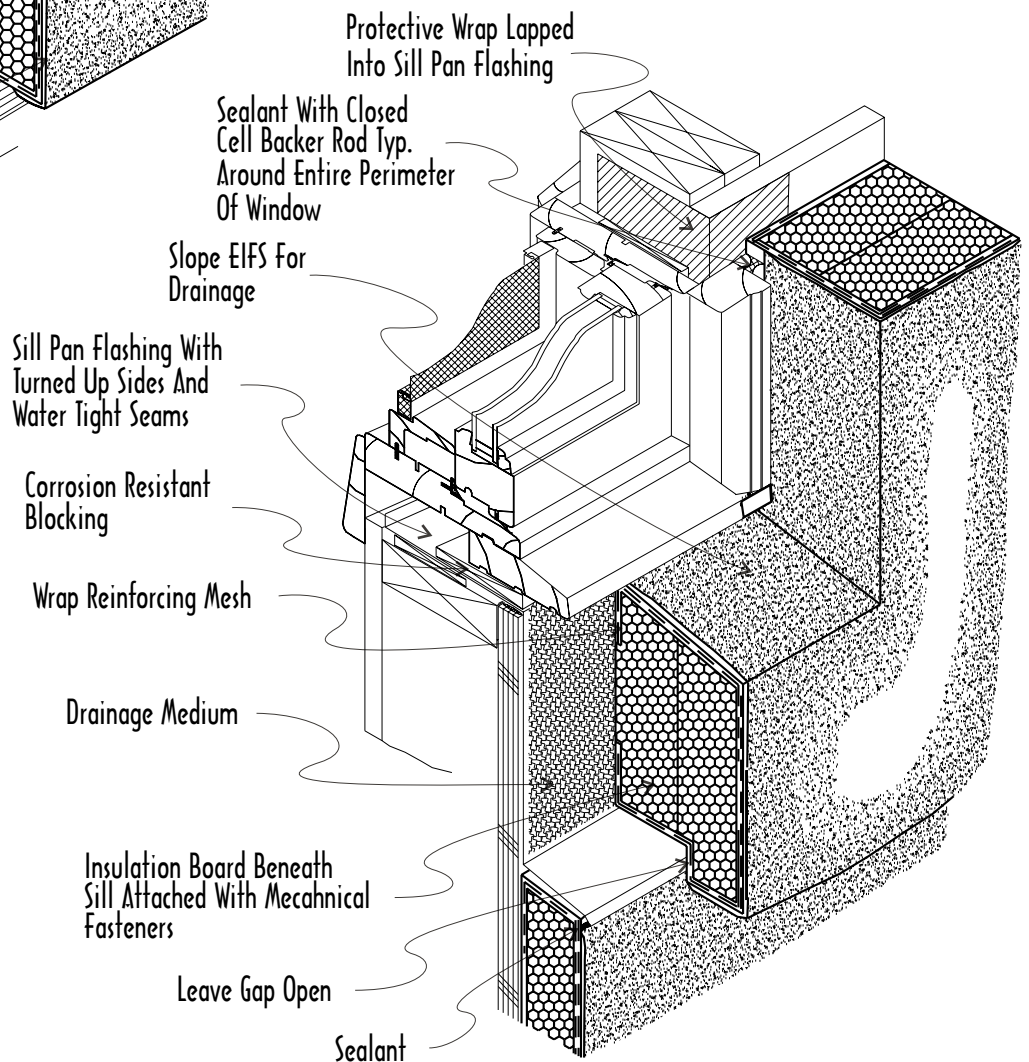
Refer to the window manufacturer's guidelines for specific installation requirements.

Fig. 1 WINDOW HEAD

Even with the use of head flashing, sealant is still required, as indicated, and serves to complement the flashing in establishing a water tight, continuous weather seal between the EIFS and the window frame.

Fig. 2 WINDOW SILL AND JAMB

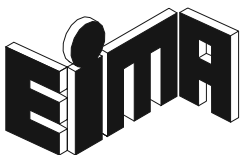
The purpose of a sill pan flashing is to catch water that may breach the window's barrier or pass beyond the sealant. The flashing should extend between the framing members of the rough opening and be sloped to allow water to drain to the outside of the EIFS. The drainage medium should hold the EPS insulation board off of the sill pan extension by at least 1/8" (3 mm). This detail depicts a concealed sill pan. However, this type of window may also be installed with an exposed sill pan as depicted in figure 2 of drawing 5.



These drawings and comments are for general information only, and EIMA specifically disclaims any design or construction intent or responsibility. THERE ARE NO WARRANTIES, EXPRESS OR IMPLIED, ISSUED OR MADE BY EIMA IN CONNECTION WITH THESE DRAWINGS AND COMMENTS OR REGARDING THE USE OF EIFS. These drawings are not intended and should not be used as a substitute for the EIFS system manufacturer's specifications and recommended construction practices and/or for professional building design services.

The specification, design and construction of all EIFS must comply with local building codes and standards, applicable compliance reports and the individual manufacturer's system requirements. These requirements differ materially. Only the EIFS manufacturer or design professional can furnish specifications, details, drawings, and construction practices to be followed for actual construction and use of an EIFS product and for compliance with applicable local building codes and construction practices. The successful installation and performance of EIFS cladding is dependent upon the proper design and construction of the adjacent materials and systems of the structure. For these reasons, only a licensed and qualified design professional can create and issue specifications, drawings and details for actual or prospective construction or renovation using EIFS. These drawings and comments apply only to new construction beginning in 2000, and are not intended for inspections, retrofit or repair. These drawings are not intended as an exclusive method for achieving desired performance. Alternative configurations may achieve equal or better performance.

These drawings and comments apply only to complete EIFS products as specifically defined in the current edition of EIMA Classification Paper.



EIFS Industry Members Association
3000 Corporate Center Drive
Morrow, GA 30260
(800) 294-3462

PLUMBING AND ELECTRICAL PENETRATIONS

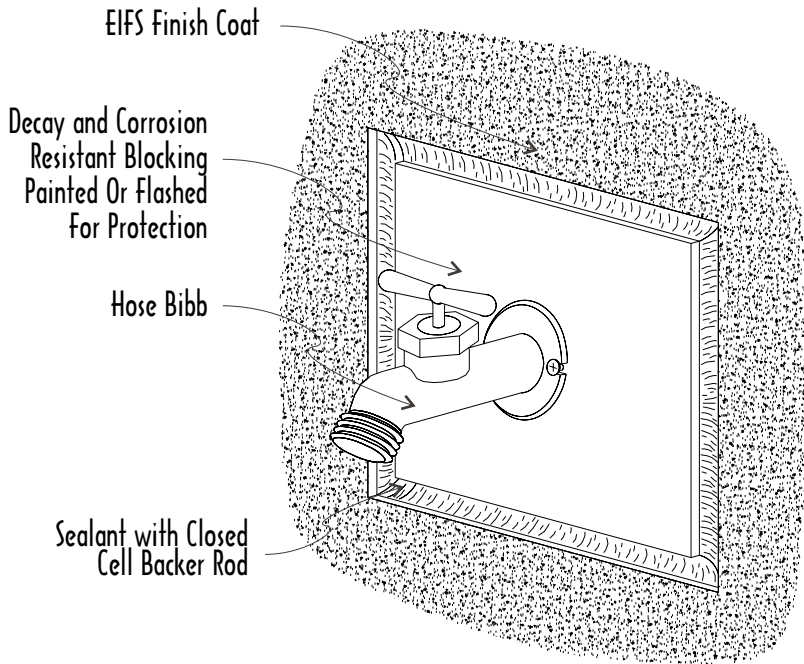
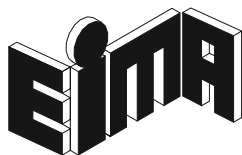
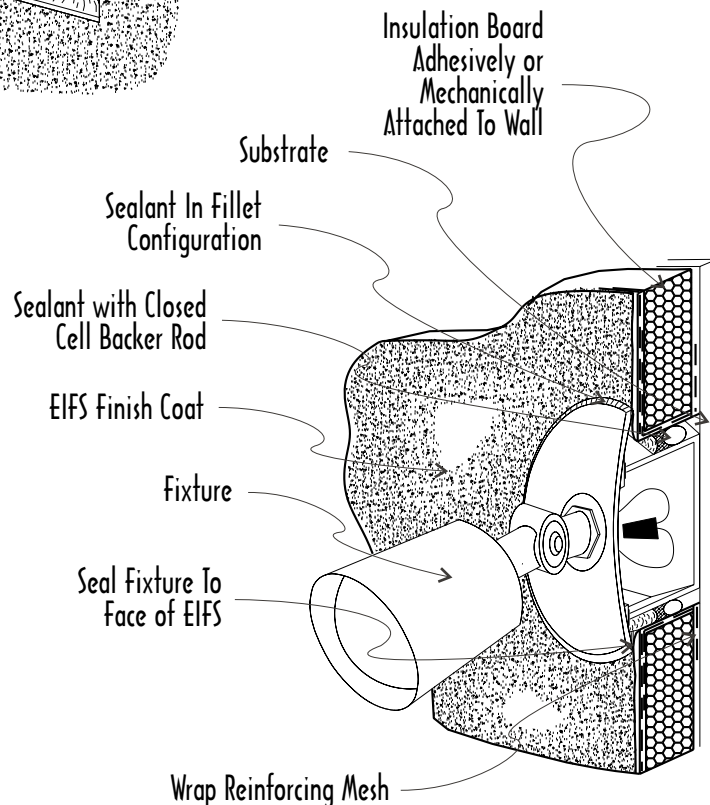


Fig. 1 HOSE BIBB ATTACHMENT

For accessories subjected to handling, such as hose bibs and railing supports, wood blocking offers protection to the EIFS while providing a base for rigid attachment. The wood blocking may be painted or encapsulated in flashing.

Fig. 2 ELECTRICAL ATTACHMENT

Electrical box installations, whether for light fixtures or outlets, may be shimmed back to the sheathing to allow for flush mounting of the electrical accessory.



EIFS Industry Members Association
3000 Corporate Center Drive
Morrow, GA 30260
(800) 294-3462

These drawings and comments are for general information only, and EIMA specifically disclaims any design or construction intent or responsibility. THERE ARE NO WARRANTIES, EXPRESS OR IMPLIED, ISSUED OR MADE BY EIMA IN CONNECTION WITH THESE DRAWINGS AND COMMENTS OR REGARDING THE USE OF EIFS. These drawings are not intended and should not be used as a substitute for the EIFS system manufacturer's specifications and recommended construction practices and/or for professional building design services.

The specification, design and construction of all EIFS must comply with local building codes and standards, applicable compliance reports and the individual manufacturer's system requirements. These requirements differ materially. Only the EIFS manufacturer or design professional can furnish specifications, details, drawings, and construction practices to be followed for actual construction and use of an EIFS product and for compliance with applicable local building codes and construction practices. The successful installation and performance of EIFS cladding is dependent upon the proper design and construction of the adjacent materials and systems of the structure. For these reasons, only a licensed and qualified design professional can create and issue specifications, drawings and details for actual or prospective construction or renovation using EIFS. These drawings and comments apply only to new construction beginning in 2000, and are not intended for inspections, retrofit or repair. These drawings are not intended as an exclusive method for achieving desired performance. Alternative configurations may achieve equal or better performance.

These drawings and comments apply only to complete EIFS products as specifically defined in the current edition of EIMA Classification Paper.

SLEEVED ATTACHMENTS

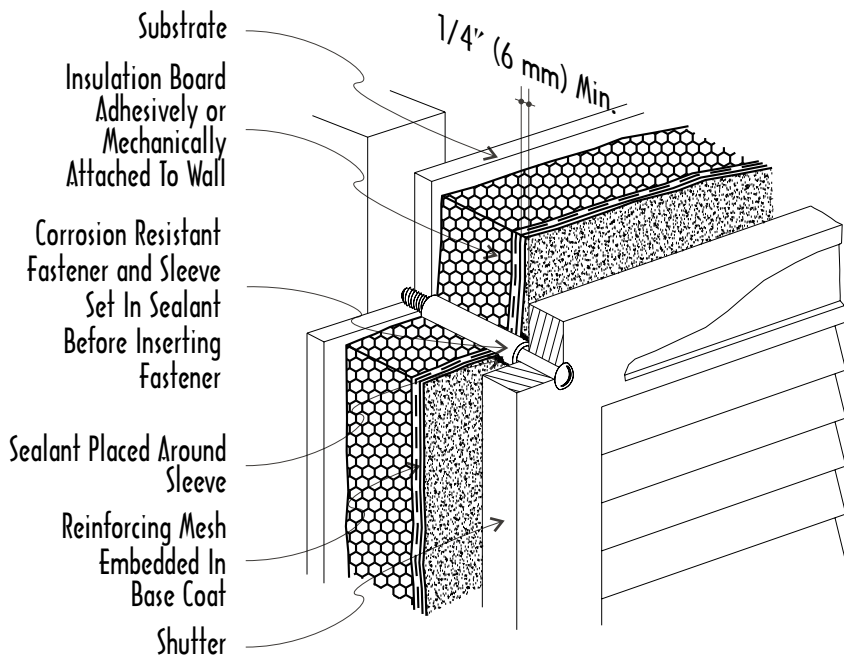
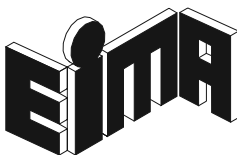
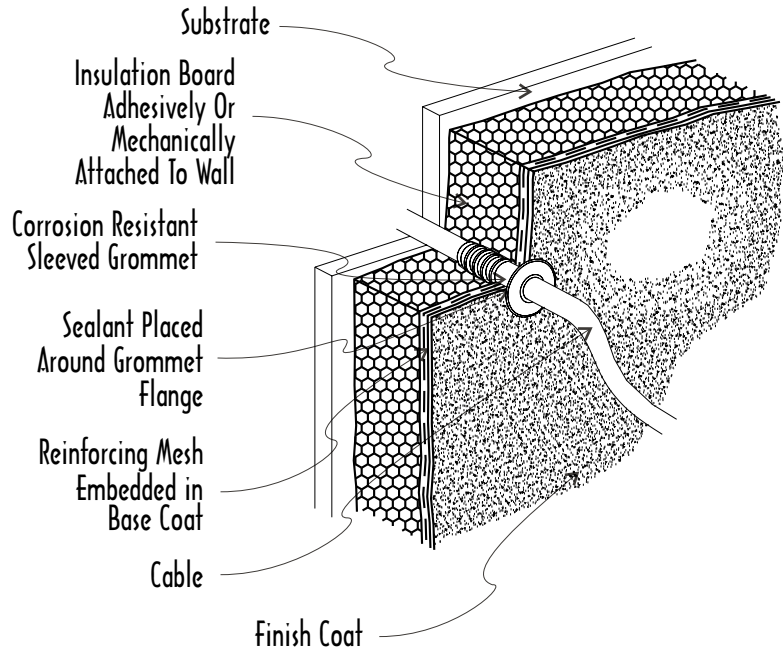


Fig. 1 SHUTTER ATTACHMENT

Sleeve and fastener attachment is adequate for most accessories. Downspouts, mail boxes, awnings, and other lightweight accessories may be mounted using the procedure shown. For non-structural sheathing such as gypsum board, ensure fastener(s) is placed in framing or blocking to provide rigid attachment.

Fig. 2 WIRING PENETRATIONS

Phone lines, cable lines, outdoor speaker wire and the like may penetrate the EIFS with the use of a sleeved grommet sized to fit snugly around the wire. The grommet flange provides an area for sealant application.



EIFS Industry Members Association
3000 Corporate Center Drive
Morrow, GA 30260
(800) 294-3462

These drawings and comments are for general information only, and EIMA specifically disclaims any design or construction intent or responsibility. THERE ARE NO WARRANTIES, EXPRESS OR IMPLIED, ISSUED OR MADE BY EIMA IN CONNECTION WITH THESE DRAWINGS AND COMMENTS OR REGARDING THE USE OF EIFS. These drawings are not intended and should not be used as a substitute for the EIFS system manufacturer's specifications and recommended construction practices and/or for professional building design services.

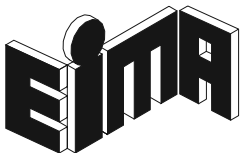
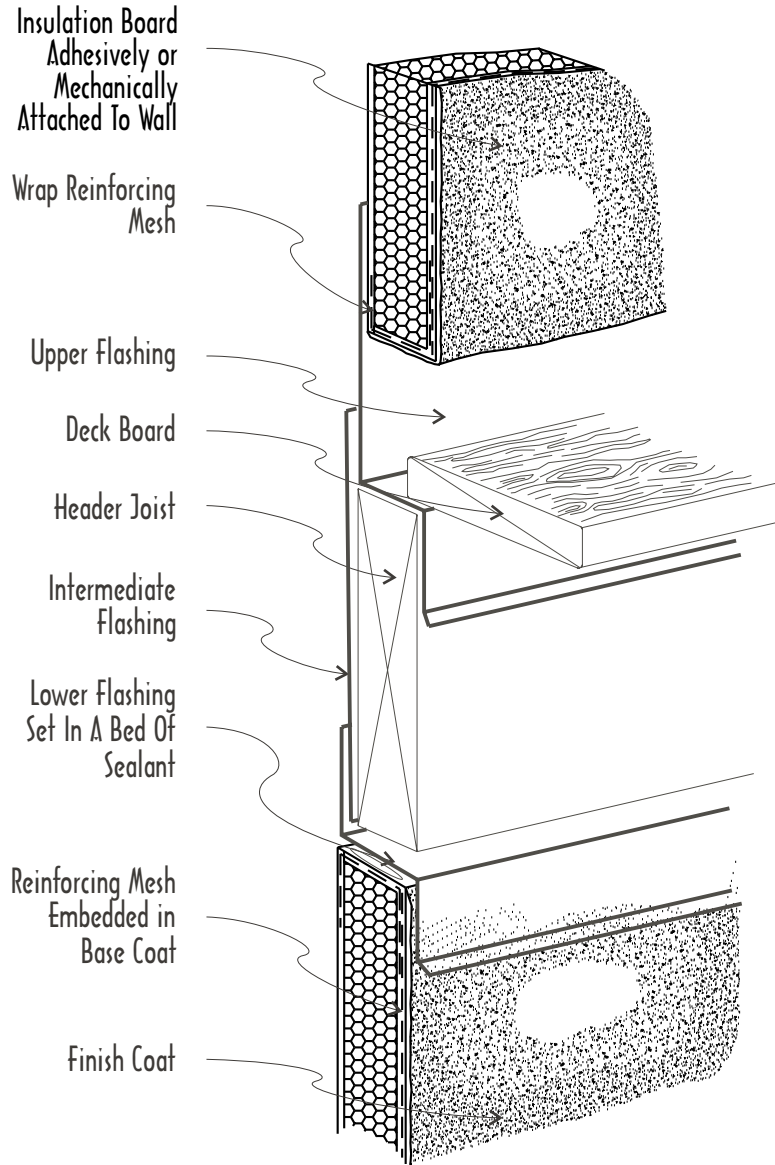
The specification, design and construction of all EIFS must comply with local building codes and standards, applicable compliance reports and the individual manufacturer's system requirements. These requirements differ materially. Only the EIFS manufacturer or design professional can furnish specifications, details, drawings, and construction practices to be followed for actual construction and use of an EIFS product and for compliance with applicable local building codes and construction practices. The successful installation and performance of EIFS cladding is dependent upon the proper design and construction of the adjacent materials and systems of the structure. For these reasons, only a licensed and qualified design professional can create and issue specifications, drawings and details for actual or prospective construction or renovation using EIFS. These drawings and comments apply only to new construction beginning in 2000, and are not intended for inspections, retrofit or repair. These drawings are not intended as an exclusive method for achieving desired performance. Alternative configurations may achieve equal or better performance.

These drawings and comments apply only to complete EIFS products as specifically defined in the current edition of EIMA Classification Paper.

EIFS TERMINATION AT PROPERLY FLASHED DECK

DECK SECTION

The EIF System is held off of deck surface to allow for installation and maintenance of sealant, facilitate removal of foreign matter which may cause water retention, and to decrease exposure of wall system to precipitation, particularly snow and ice.



EIFS Industry Members Association
3000 Corporate Center Drive
Morrow, GA 30260
(800) 294-3462

These drawings and comments are for general information only, and EIMA specifically disclaims any design or construction intent or responsibility. THERE ARE NO WARRANTIES, EXPRESS OR IMPLIED, ISSUED OR MADE BY EIMA IN CONNECTION WITH THESE DRAWINGS AND COMMENTS OR REGARDING THE USE OF EIFS. These drawings are not intended and should not be used as a substitute for the EIFS system manufacturer's specifications and recommended construction practices and/or for professional building design services.

The specification, design and construction of all EIFS must comply with local building codes and standards, applicable compliance reports and the individual manufacturer's system requirements. These requirements differ materially. Only the EIFS manufacturer or design professional can furnish specifications, details, drawings, and construction practices to be followed for actual construction and use of an EIFS product and for compliance with applicable local building codes and construction practices. The successful installation and performance of EIFS cladding is dependent upon the proper design and construction of the adjacent materials and systems of the structure. For these reasons, only a licensed and qualified design professional can create and issue specifications, drawings and details for actual or prospective construction or renovation using EIFS. These drawings and comments apply only to new construction beginning in 2000, and are not intended for inspections, retrofit or repair. These drawings are not intended as an exclusive method for achieving desired performance. Alternative configurations may achieve equal or better performance.

These drawings and comments apply only to complete EIFS products as specifically defined in the current edition of EIMA Classification Paper.

EXPANSION JOINTS AND REVEALS

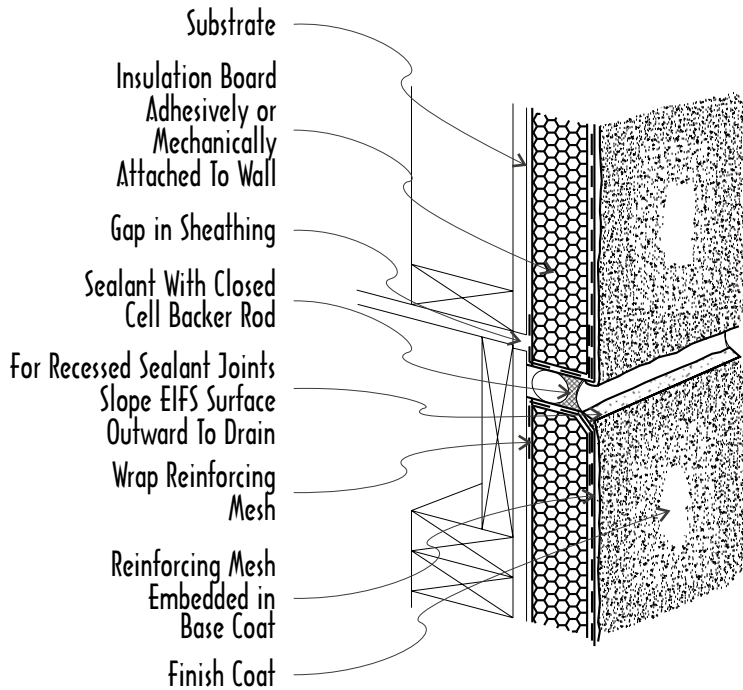
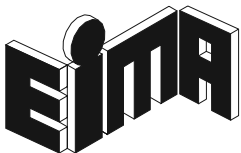
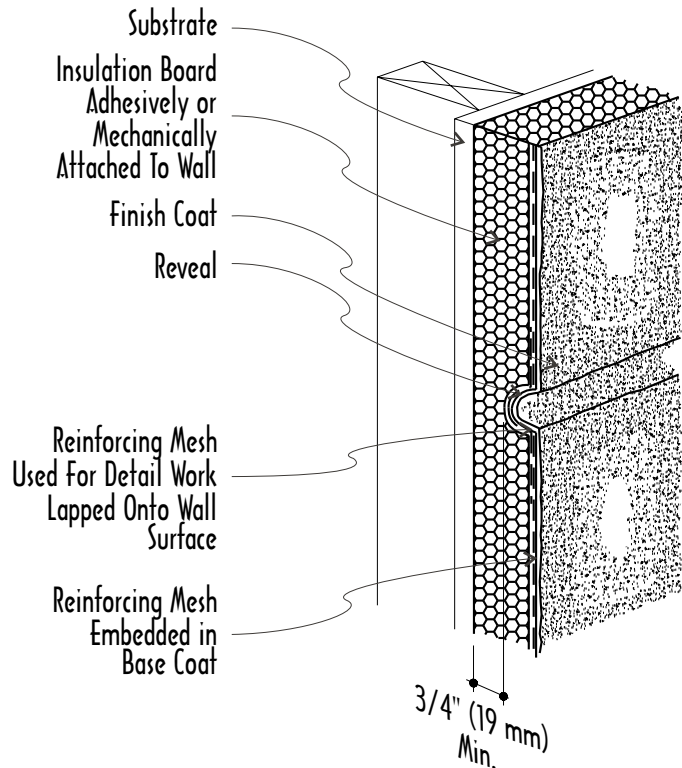


Fig. 1 FLOOR LINE EXPANSION JOINT

Expansion joints shall be installed in the EIF System as per manufacturers' recommendations but as a minimum where changes in substrate occur, where a joint exists in the substrate, and at floor lines in wood framed construction.

Fig. 2 AESTHETIC REVEALS

Reveals cut into the insulation board serve an aesthetic function by offering the look of joints without having to terminate the system. Grooves can also serve as a drip edge at soffits or head locations of fenestrations.



EIFS Industry Members Association
 3000 Corporate Center Drive
 Morrow, GA 30260
 (800) 294-3462

CHIMNEY FLASHING

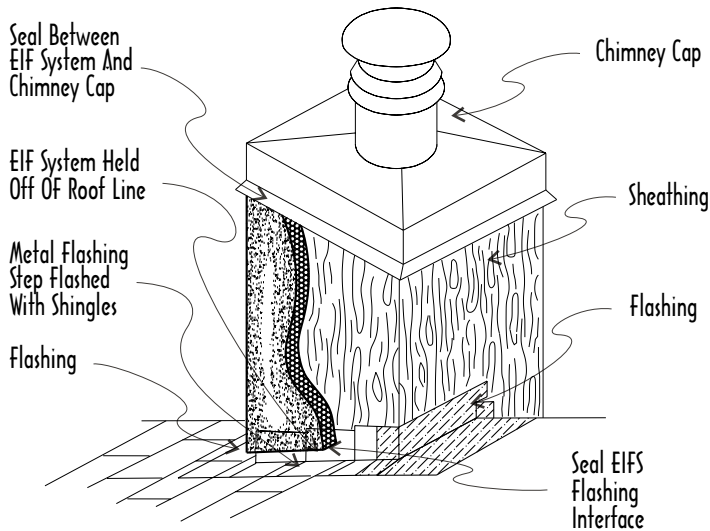


Fig. 1 PROPER FLASHING

The flashing located on the high side of the chimney shall divert water away from the EIF System running down the side of the chimney. Turned out flashing ensures proper diversion of water.

Fig. 2 CHIMNEY WITH EIFS INSTALLED

With the EIF System terminating at the top of the turned out flashing leg and a fillet bead of sealant applied to the flashing/EIFS interface, water is diverted around the chimney.

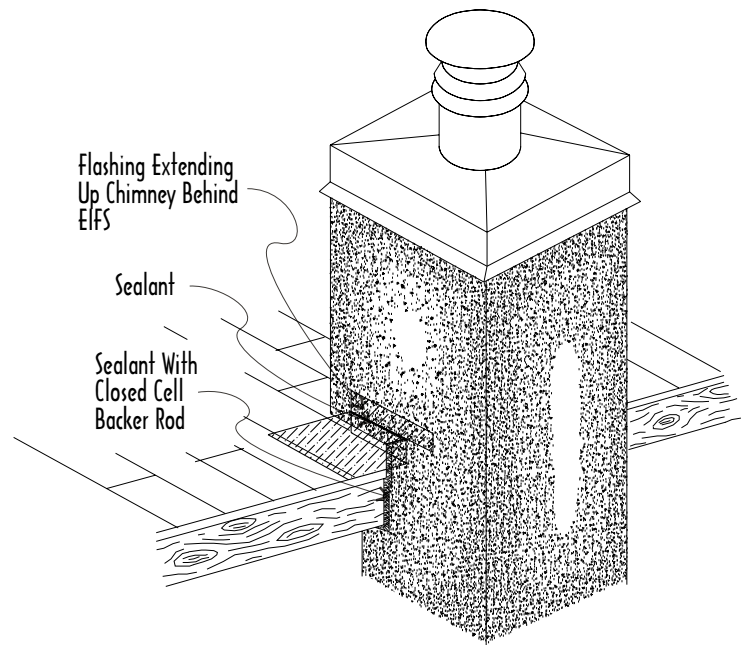
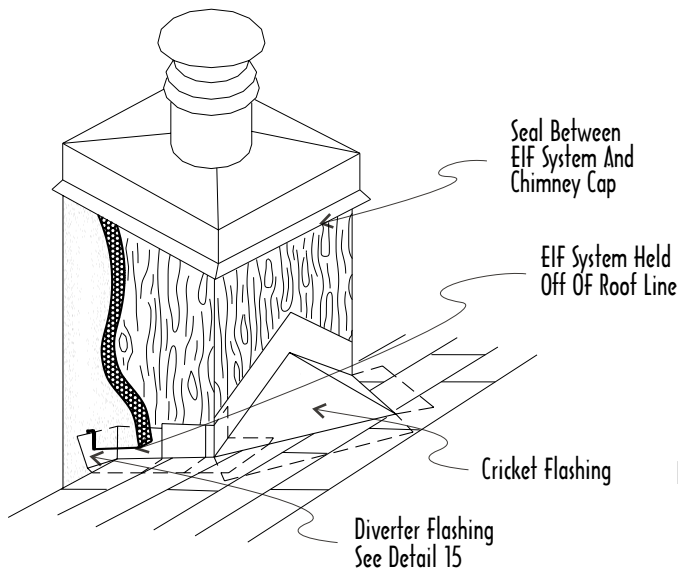
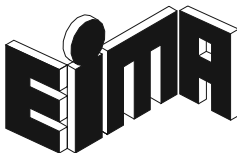


Fig. 3 EIFS CHIMNEY WITH CRICKET

Cricket detailing helps divert water around the chimney and alleviates snow and ice buildup. Diverter flashing is used anywhere an area of water shed terminates into a vertical wall.



NOTE: Flashing shall have watertight joints. Refer to the Sheet Metal and Air Conditioning Contractors National Association (SMACNA) for Flashing Configurations.



EIFS Industry Members Association
3000 Corporate Center Drive
Morrow, GA 30260
(800) 294-3462

These drawings and comments are for general information only, and EIMA specifically disclaims any design or construction intent or responsibility. THERE ARE NO WARRANTIES, EXPRESS OR IMPLIED, ISSUED OR MADE BY EIMA IN CONNECTION WITH THESE DRAWINGS AND COMMENTS OR REGARDING THE USE OF EIFS. These drawings are not intended and should not be used as a substitute for the EIFS system manufacturer's specifications and recommended construction practices and/or for professional building design services.

The specification, design and construction of all EIFS must comply with local building codes and standards, applicable compliance reports and the individual manufacturer's system requirements. These requirements differ materially. Only the EIFS manufacturer or design professional can furnish specifications, details, drawings, and construction practices to be followed for actual construction and use of an EIFS product and for compliance with applicable local building codes and construction practices. The successful installation and performance of EIFS cladding is dependent upon the proper design and construction of the adjacent materials and systems of the structure. For these reasons, only a licensed and qualified design professional can create and issue specifications, drawings and details for actual or prospective construction or renovation using EIFS. These drawings and comments apply only to new construction beginning in 2000, and are not intended for inspections, retrofit or repair. These drawings are not intended as an exclusive method for achieving desired performance. Alternative configurations may achieve equal or better performance.

These drawings and comments apply only to complete EIFS products as specifically defined in the current edition of EIMA Classification Paper.

SOFFIT AND GABLE END

Fig. 1 GABLE END

The frieze board should extend over the EIFS face approximately 1 1/2" (38 mm). For less of an overlap it is advisable to terminate the EPS board 1/2" (13 mm) from the wood blocking and apply sealant with closed cell backer rod.

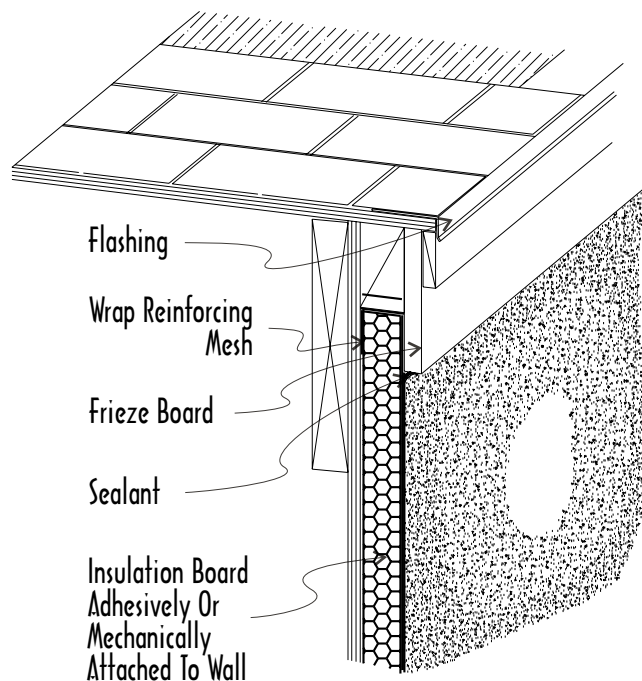
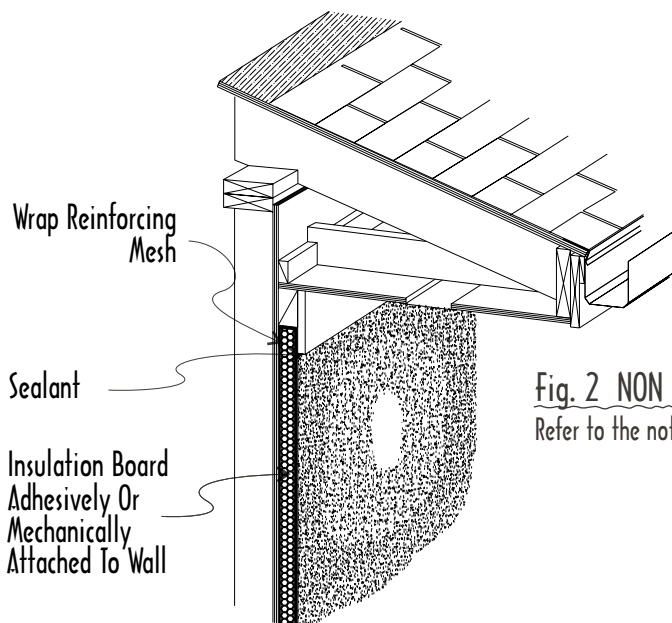
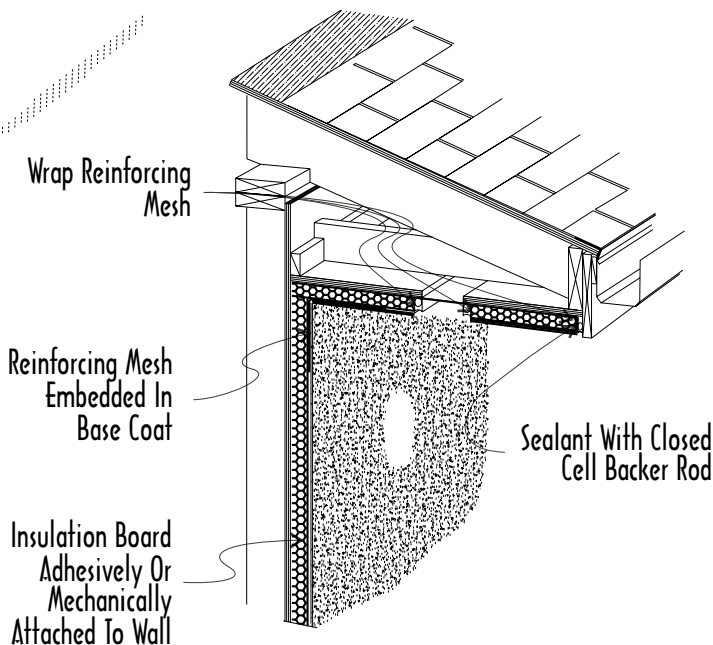


Fig. 2 NON EIFS SOFFIT
Refer to the note for Figure 1.

Fig. 3 EIFS SOFFIT

As with all inside corners, the reinforcing mesh from both legs of the corner should lap onto the adjacent leg 8" (200 mm). Under certain circumstances, an expansion joint may be required at the inside corner. Refer to the manufacturer's specifications for guidelines.



EIFS Industry Members Association
3000 Corporate Center Drive
Morrow, GA 30260
(800) 294-3462

These drawings and comments are for general information only, and EIMA specifically disclaims any design or construction intent or responsibility. THERE ARE NO WARRANTIES, EXPRESS OR IMPLIED, ISSUED OR MADE BY EIMA IN CONNECTION WITH THESE DRAWINGS AND COMMENTS OR REGARDING THE USE OF EIFS. These drawings are not intended and should not be used as a substitute for the EIFS system manufacturer's specifications and recommended construction practices and/or for professional building design services.

The specification, design and construction of all EIFS must comply with local building codes and standards, applicable compliance reports and the individual manufacturer's system requirements. These requirements differ materially. Only the EIFS manufacturer or design professional can furnish specifications, details, drawings, and construction practices to be followed for actual construction and use of an EIFS product and for compliance with applicable local building codes and construction practices. The successful installation and performance of EIFS cladding is dependent upon the proper design and construction of the adjacent materials and systems of the structure. For these reasons, only a licensed and qualified design professional can create and issue specifications, drawings and details for actual or prospective construction or renovation using EIFS. These drawings and comments apply only to new construction beginning in 2000, and are not intended for inspections, retrofit or repair. These drawings are not intended as an exclusive method for achieving desired performance. Alternative configurations may achieve equal or better performance.

These drawings and comments apply only to complete EIFS products as specifically defined in the current edition of EIMA Classification Paper.

DORMER FLASHING

NOTE: Flashing shall have watertight joints. Refer to the Sheet Metal and Air Conditioning Contractors National Association (SMACNA) for Flashing Configurations.

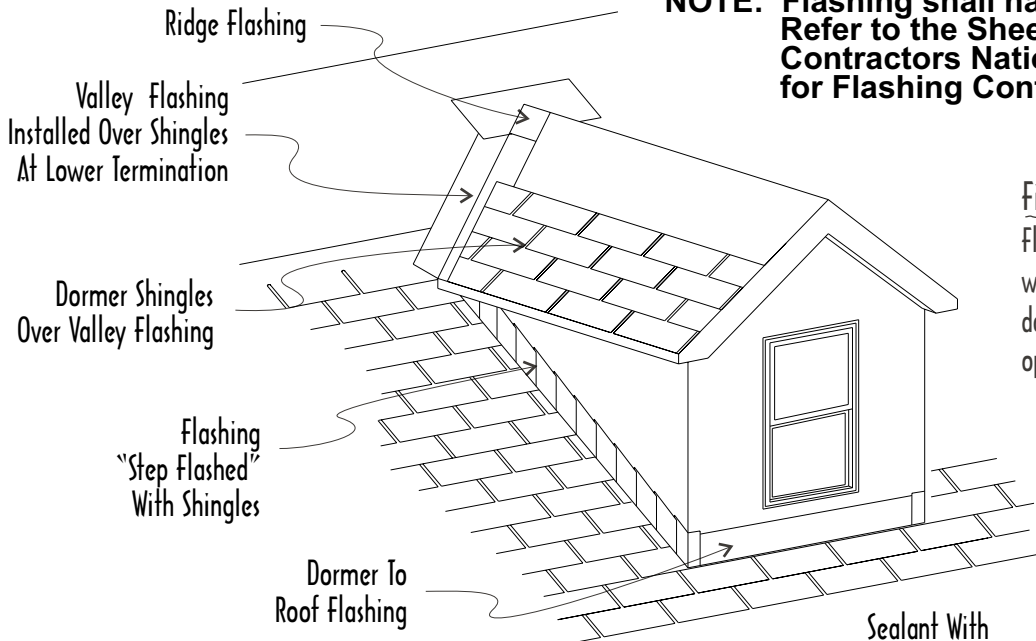
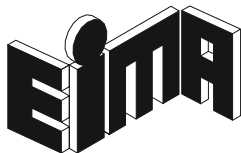
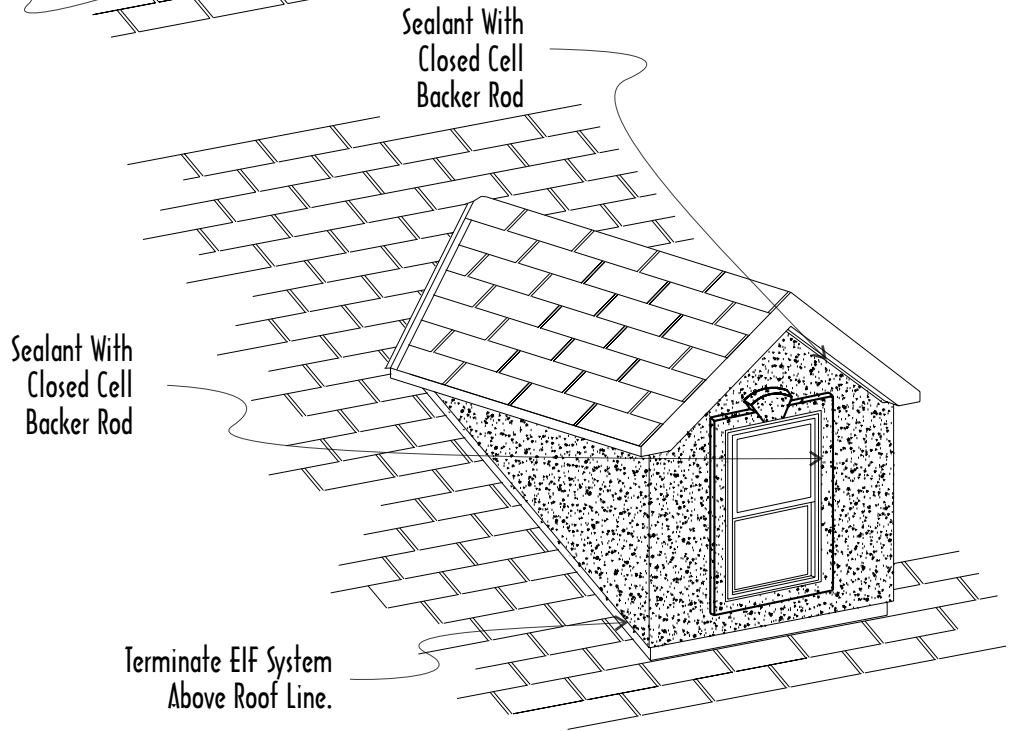


Fig. 1 FLASHINGS

Flashings should extend up wall. Where window is close to roof line, continue dormer-to-roof flashing into window opening.

Fig. 2 COMPLETED DORMER

The EIF system should be terminated above the roof line to facilitate roof repairs and treatment of EIFS termination. In addition, the clearance allows for free-flow of water and minimizes accumulation of debris. Sealant with closed cell backer rod should be placed between the EIF system and gable and also around window perimeter. For gable end with frieze board see detail 13.



EIFS Industry Members Association
3000 Corporate Center Drive
Morrow, GA 30260
(800) 294-3462

ROOF AND WALL INTERSECTION

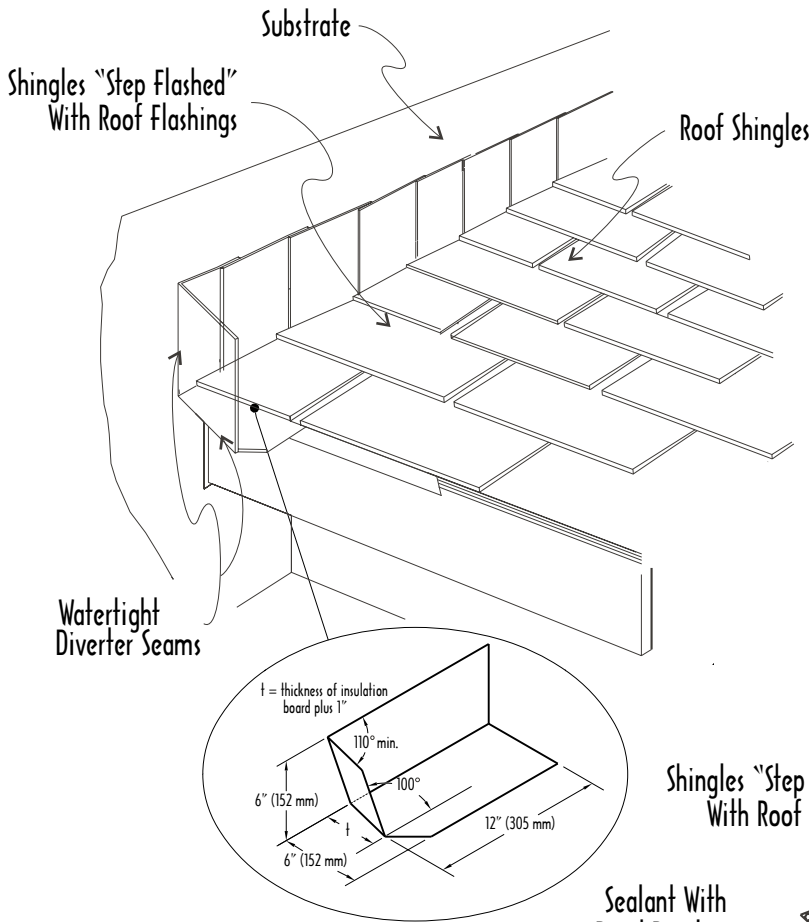
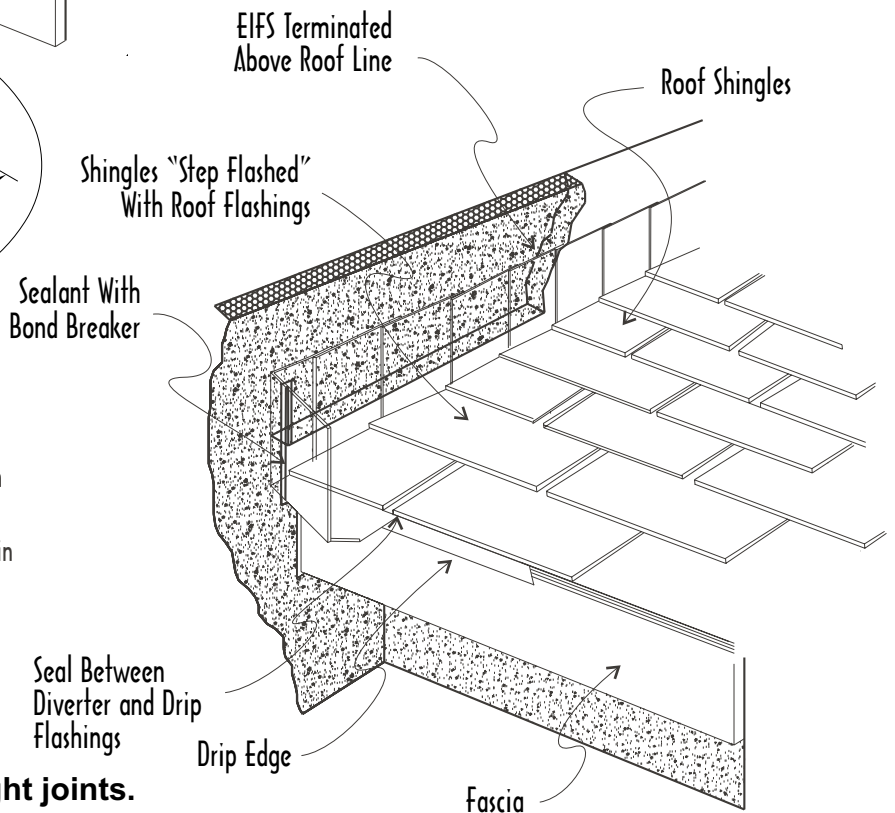


Fig. 1 FLASHING

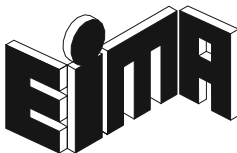
Flashing should extend up behind EIF system. A diverter flashing should be used where ever a water shed terminates into a vertical wall (as shown).

Fig. 2 EIFS INSTALLED

The EIF system should be terminated above the roof line to facilitate roof repairs and treatment of EIFS termination. In addition, the clearance allows for free-flow of water and minimizes accumulation of debris. Set the diverter flashing in a full bed of roof cement between the roof sheathing and underlayment.



NOTE: Flashing shall have watertight joints.



EIFS Industry Members Association
3000 Corporate Center Drive
Morrow, GA 30260
(800) 294-3462

These drawings and comments are for general information only, and EIMA specifically disclaims any design or construction intent or responsibility. THERE ARE NO WARRANTIES, EXPRESS OR IMPLIED, ISSUED OR MADE BY EIMA IN CONNECTION WITH THESE DRAWINGS AND COMMENTS OR REGARDING THE USE OF EIFS. These drawings are not intended and should not be used as a substitute for the EIFS system manufacturer's specifications and recommended construction practices and/or for professional building design services.

The specification, design and construction of all EIFS must comply with local building codes and standards, applicable compliance reports and the individual manufacturer's system requirements. These requirements differ materially. Only the EIFS manufacturer or design professional can furnish specifications, details, drawings, and construction practices to be followed for actual construction and use of an EIFS product and for compliance with applicable local building codes and construction practices. The successful installation and performance of EIFS cladding is dependent upon the proper design and construction of the adjacent materials and systems of the structure. For these reasons, only a licensed and qualified design professional can create and issue specifications, drawings and details for actual or prospective construction or renovation using EIFS. These drawings and comments apply only to new construction beginning in 2000, and are not intended for inspections, retrofit or repair. These drawings are not intended as an exclusive method for achieving desired performance. Alternative configurations may achieve equal or better performance.

These drawings and comments apply only to complete EIFS products as specifically defined in the current edition of EIMA Classification Paper.